

Columbia Plateau Wind Farm Background Information

The proposed Columbia Plateau Wind Farm lies adjacent to and east of the Wild Horse Wind Farm on approximately 6500 acres of uninhabited land currently zoned as Forest/Range. Fifty seven hundred acres are held fee simple by two private owners. Eight hundred eighty acres will be leased from the Washington State DNR.

In order to promote discussion, several aspects of the project are bulleted below.

- The project includes fifty-five 2.5 MW towers providing a total output of approximately 135 MW. The tower height when one blade is vertical is 134 meters. Care has been taken to place the towers to minimize their visual impact on the people living nearby.
- In support of the application, we anticipate providing the following studies before the first public hearing.
 1. Cultural Inventory
 2. Wildlife Impact Analysis
 3. Noise Impact Analysis
 4. Visual Impact Analysis
 5. Traffic Impact Analysis
- Access to the proposed wind farm will be built in the county right of way running north from Fox road, sixty feet centered on the section line dividing sections 28 and 27 in T. 18 N. The access road will be built to County standards.
- The approximate tower locations, the boundary of the proposed expansion of the overlay zone, the access point, the houses near the project, the 500KV transmission lines, the adjacent boundary of the current Wind Overlay Zone, and the nearby wind farms are shown on the accompanying maps.

Contact information
Gene Martin
509-8991413
email- gmartin855@gmail.com

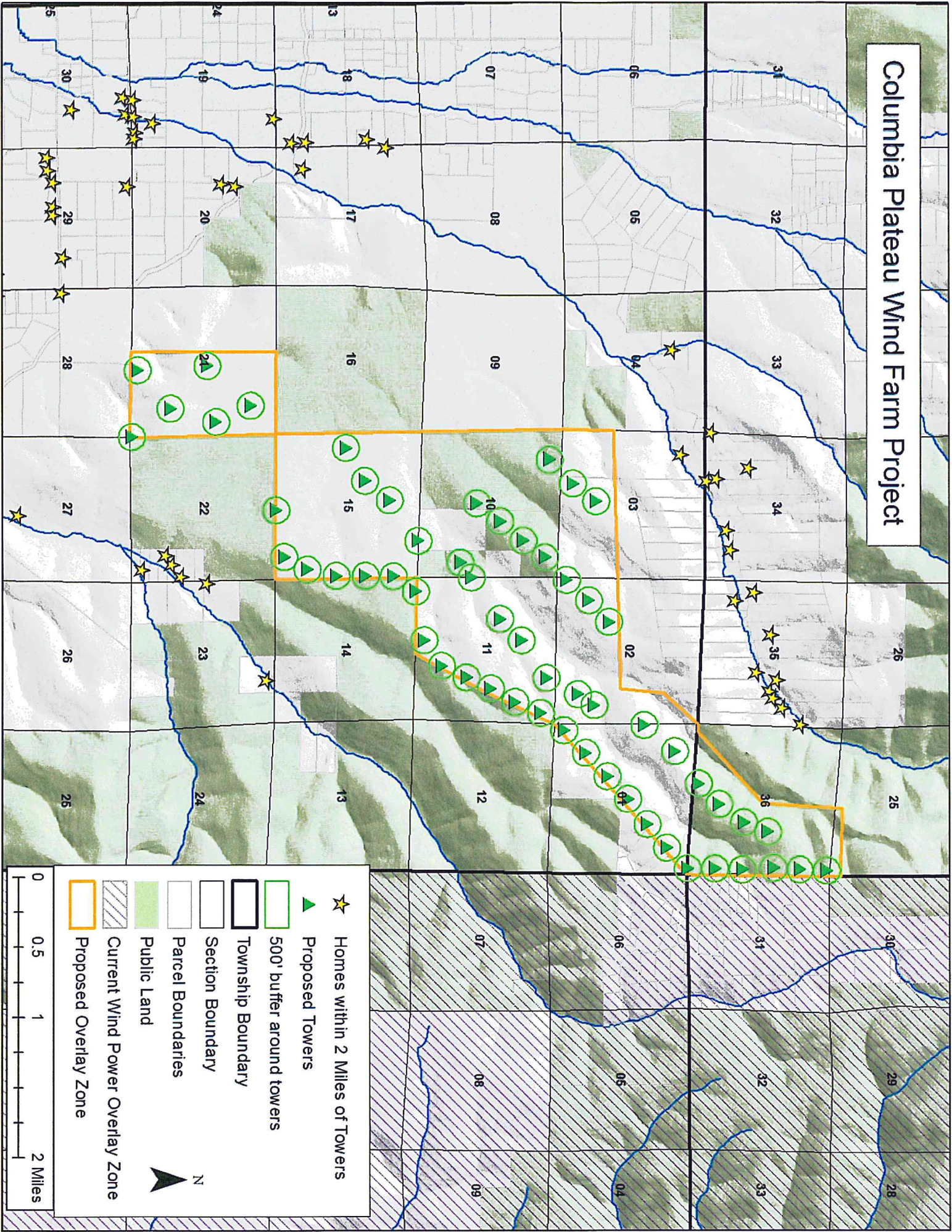
Doug Mitchell
509-899-0011
email – jdmhomes@elltel.net

RECEIVED

JUN 18 2013

KITTITAS COUNTY
CDS

Columbia Plateau Wind Farm Project



	Homes within 2 Miles of Towers
	Proposed Towers
	500' buffer around towers
	Township Boundary
	Section Boundary
	Parcel Boundaries
	Public Land
	Current Wind Power Overlay Zone
	Proposed Overlay Zone

N
 0 0.5 1 2 Miles

Columbia Plateau Wind Farm Project and Other Windfarms in Eastern Kittitas County

